



MONTHLY MEMBERSHIP PROGRESS REPORT

District 322C3

Results as of: 08/31/2018

GMT: SWADESH RANJAN SAHA

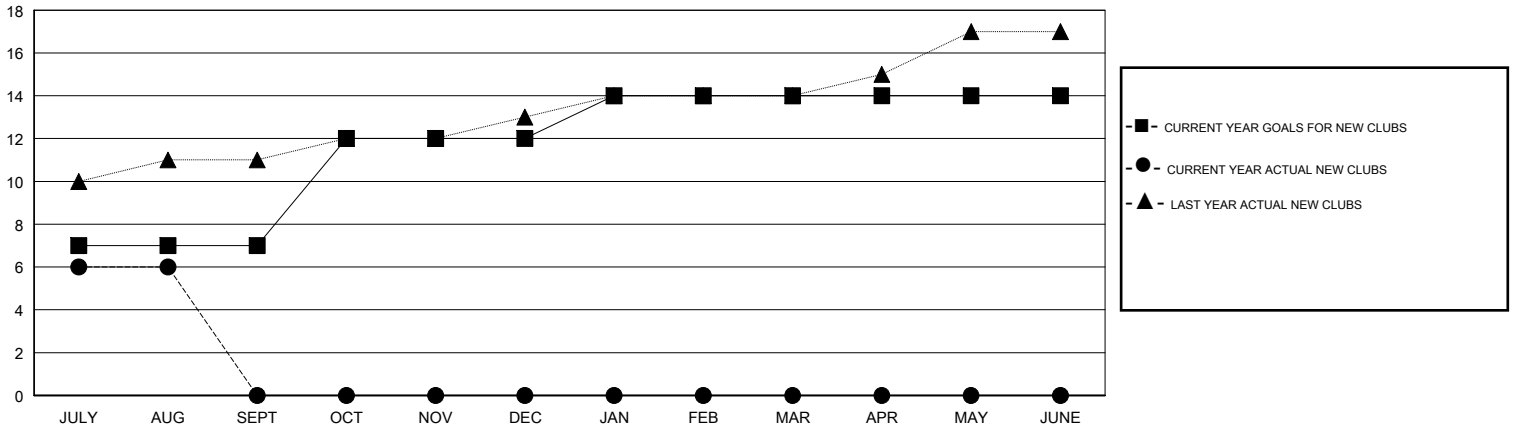
LOCATION INDIA

GMT CA

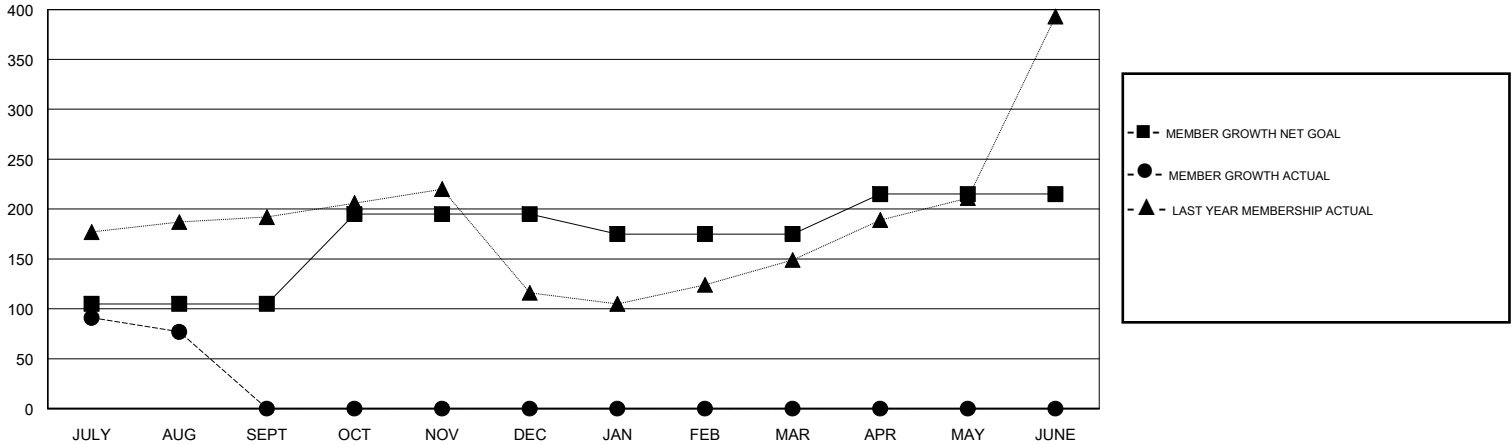
Clubs			
RESULTS FOR 2018-2019			
QUARTER	NEW CLUB GOAL	NEW CLUBS	DROPPED CLUBS
JULY/AUG/SEPT	7	6	1
OCT/NOV/DEC	5	0	0
JAN/FEB/MAR	2	0	0
APR/MAY/JUNE	0	0	0

Members			
RESULTS FOR 2018-2019			
QUARTER	MEMBER GROWTH NET GOAL	MEMBER GROWTH ACTUAL	DROPPED MEMBERS ACTUAL (including transfers)
JULY/AUG/SEPT	105	178	100
OCT/NOV/DEC	90	0	0
JAN/FEB/MAR	-20	0	0
APR/MAY/JUNE	40	0	0

GOALS AND ACTUAL NEW CLUBS CUMULATIVE



GOALS AND ACTUAL MEMBERS CUMULATIVE



DROPPED CLUBS: 1	23 CLUBS OF 114 ADDED 1 OR MORE NEW MEMBERS	<u>GENDER DISTRIBUTION</u>	
DROPPED MEMBERS		MALE	2,890 (73.50%)
DECEASED	8	FEMALE	1,042 (26.50%)
CLUB CANCELLED	10	Women Percentage Fiscal Year Goal: 26%	
OTHER	82	TOTAL FAMILY UNIT MEMBERS	2,654
TOTAL	100	FAMILY MEMBERS PAYING HALF DUES	1,665

[CLICK HERE FOR CUMULATIVE MEMBERSHIP DATA](#)